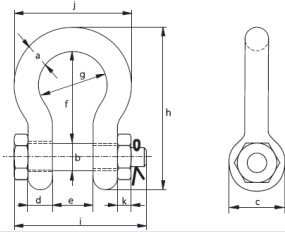


# Standard Safety Bolt Shackle

Bow shackles with safety bolt.



## Certification

At no extra charge, this product can be supplied with a works certificate, 3.1 material certificate, manufacturer test certificate, EC Declaration of Conformity and all shackles starting from 2 ton can be supplied with DNV 2.7-1 certificate.

### Material:

Bow and pin high tensile steel, Grade 6, quenched and tempered

### Temperature:

-20 °C up to +200 °C

### Safety Factor:

MBL equals 6 x WLL

### Finish

EN 13889 and meets performance requirements of US Fed. Spec. RR-C-271 Type IVA Class 3, Grade A hot dipped galvanized

## Specifications

Working Load Limit (tons)	Diameter Bow a (mm)	Diameter Pin b (mm)	Diameter Eye c (mm)	Width Eye d (mm)	Width Inside e (mm)	Length Inside f (mm)	Width Bow g (mm)	Length h (mm)	Length Bolt i (mm)	Width j (mm)	Thickness Nut k (mm)	Weight Each (kg)
0.5	7.0	8	16.5	7	12.0	29.0	20	48.5	42	34	4	0.06
.75	9.0	10	20	9	13.5	32.0	22	56	50	40	5	.11
1.0	10.0	11	22.5	10	17.0	36.5	26	63.5	60	46	8	.16
1.5	11.0	13	26.5	11	19.0	43.0	29	74	67	51	11	.22
2.0	13.5	16	34	13	22.0	51.0	32	89	82	58	13	.42
3.25	16.0	19	40	16	27.0	64.0	43	110	98	75	17	.74
4.75	19.0	22	46	19	31.0	76.0	51	129	114	89	19	1.18
6.5	22.0	25	52	22	36.0	83.0	58	144	130	102	22	1.77
8.5	25.0	28	69	25	43.0	95.0	68	164	150	118	25	2.58
9.5	28.0	32	66	28	47.0	108.0	75	185	166	131	27	3.66
12.0	32.0	35	72	32	51.0	115.0	83	201	178	147	30	4.91
13.5	35.0	38	80	35	57.0	133.0	92	227	197	162	33	6.54
17.0	38.0	42	88	38	60.0	146.0	99	249	202	175	19	8.19
25.0	45.0	50	103	45	74.0	178.0	126	300	249	216	23	14.22
35.0	50.0	57	111	50	83.0	197.0	138	331	269	238	26	19.85
42.5	57.0	65	130	57	95.0	222.0	160	377	301	274	29	28.33
55.0	65.0	70	145	65	105.0	260.0	180	433	330	310	32	39.59
85.0	75.0	83	162	73	127.0	329.0	190	527	380	340	39	62.00